



A. Steel Vertical/Horizontal Combination Organizer

Constructed of durable heavy-gauge steel with scratch and chip-resistant finish that stands up to everyday use. Features three, deep letter-sized, horizontal file compartments on the right coupled with three large-capacity vertical slots on the left for optimal use of valuable desktop space. Easily handles many combinations of files, forms, magazines, reports, catalogs, sales orders, folders, pads of paper, proposals, and mail. Many features like rounded corners, recessed shelves, and tapered tops make loading and retrieval of documents fast and easy. Non-slip, non-mar padded feet provide a scratch-free, secure grip.

Model No.	Description	Color	Dimensions		
			W	H	D
26420HV004*	Combination Organizer	Black	15"	8-1/8"	11"

*Full color retail packaging.



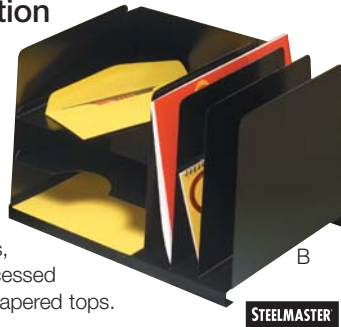
A

STEELMASTER

Our combination organizers are perfect for corporate offices, home offices, schools, and shared document storage for use by students, teachers, entrepreneurs, and more...

B. Steel Horizontal/Vertical Combination Organizer

Durable heavy-gauge steel construction. Features three, deep letter-sized, horizontal file compartments on the left coupled with three large-capacity vertical slots on the right. Easily holds forms, reports, folders, and more. Features recessed shelves, rounded corners, and tapered tops. Non-slip, non-mar padded feet.



B

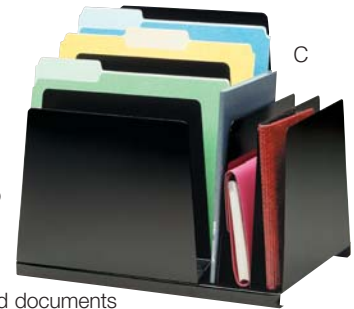
STEELMASTER

Model No.	Description	Color	Dimensions		
			W	H	D
264R3HVBK*	Combination Organizer	Black	15"	8-1/8"	11"

*Full color retail packaging.

C. Steel Slanted Combination Organizer

Papers are viewable at-a-glance! Constructed of durable heavy-gauge steel with scratch and chip resistant finish. Four ascending letter-sized, vertical file compartments on the left make viewing of crucial work folders and documents as easy as possible. Right side offers more space with three large-capacity vertical slots. Features rounded corners, slanted compartments, and tapered tops. Non-slip, non-mar padded feet.



C

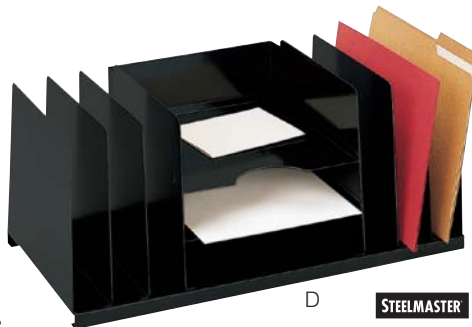
STEELMASTER

Model No.	Description	Color	Dimensions		
			W	H	D
2648S2VBK*	Slanted Organizer	Black	15-1/4"	12-3/4"	11"

*Full color retail packaging.

D. Steel Combination Desk Organizer

Constructed of durable heavy-gauge steel with scratch and chip-resistant finish. Three letter-sized, vertical file slots on both ends coupled with three letter-sized, horizontal file compartments in the middle ensure optimal use of valuable desktop space. Stores file folders, magazines, pads of paper, reports, sales orders, and mail. Features rounded corners and recessed shelves. Non-slip, non-mar padded feet provide scratch-free, secure grip.



D

STEELMASTER

Model No.	Description	Color	Dimensions		
			W	H	D
2643DOBK	Combination Organizer	Black	21-1/2"	8-3/4"	11"

E. Jumbo Combination Organizer For Large Forms

Ideal for computer print-outs and legal-sized sheets. Durable heavy-gauge steel construction. Scratch and chip-resistant finish. Features four letter-sized, vertical file slots on both ends coupled with three legal-sized, horizontal file compartments in the middle for maximum versatility. Closed back prevents documents from sliding out the back so there's no need to place it against a wall. Organizes forms, magazines, reports, catalogs, sales orders, folders, proposals, and more. Rounded corners, recessed shelves, and tapered tops make loading and retrieval of documents fast and easy. Non-slip, non-mar padded feet.



E

STEELMASTER

Model No.	Description	Color	Dimensions		
			W	H	D
26420VCVBLA	Jumbo Organizer	Black	30"	8-1/8"	11"

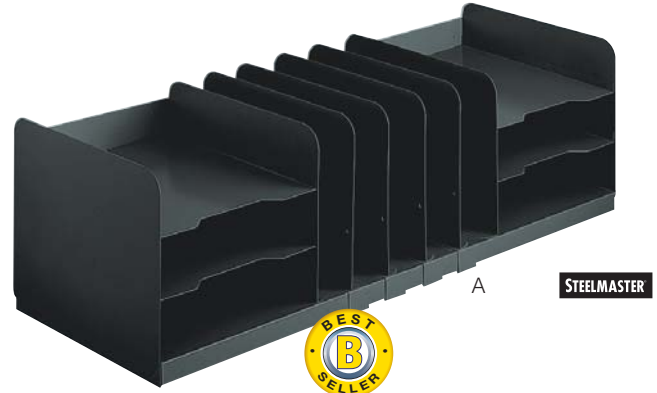


A. Steel Combination Organizer With Adjustable Shelves

Durable heavy-gauge steel construction that stands up to everyday use. Scratch and chip-resistant finish. Three letter-sized, horizontal file compartments on both ends coupled with five adjustable vertical slots in the middle for maximum versatility. Closed back prevents documents from sliding out the back so there's no need to place it against a wall. Organizes folders, forms, magazines, reports, catalogs, sales orders, proposals, and a combination of files. Non-slip, non-mar padded feet.

Model No.	Description	Color	W	Dimensions	
				H	D
26420HVHABLA	Combination Organizer	Black	30"	8-1/8"	11"

Rounded corners, recessed shelves, and tapered tops make loading and retrieval of documents fast and easy!



B. Combination Organizer

Contemporary styling for front or back office. All steel desktop organizer has attractive and durable, powder-coated finish. Includes non-skid pads to protect work surface. Features three vertical pockets and three horizontal shelves. Organizes binders, books, catalogs, files and paper all in the same unit.



Model No.	Description	Color	W	Dimensions	
				H	D
264003C04	Combination Organizer	Black	9-5/8"	14-1/8"	11-1/8"

C. Compact Steel Combination Organizer

Constructed of durable heavy-gauge steel with scratch and chip-resistant finish. Features three letter-sized, horizontal file compartments underneath coupled with five large-capacity vertical slots on top for optimal use of valuable desktop space. Compact size, but easily handles many combinations of files, catalogs, forms, sales orders, magazines, reports, folders, proposals, and mail. Non-slip, non-mar padded feet provide a scratch-free, secure grip.



Model No.	Description	Color	W	Dimensions	
				H	D
2645VHBK	Compact Organizer	Black	9-5/8"	14-1/8"	11-1/8"

D. Legal Size Combination Organizer

Organizer is ideal for computer print-outs and legal-sized sheets. Constructed of durable heavy-gauge steel with scratch and chip-resistant finish. Features three, legal-sized, horizontal file compartments on the right coupled with four large-capacity vertical slots on the left. Files and organizes reports, sales orders, folders, pads of paper, and catalogs. Non-slip, non-mar padded feet.

Model No.	Description	Color	W	Dimensions	
				H	D
264202004*	Legal Size Organizer	Black	25-7/8"	8-1/8"	11"

*Full color retail packaging.

