



A

**A. Dupli-Key® Two-Tag Cabinets**



- Organize & secure your keys!
- Perfect for offices, rental management, facilities management, storage facilities, fleet trucks, and auto rentals

The Dupli-Key system utilizes two different sets of numbered key tags to make managing keys as efficient as possible. Attach your master keys to red octagonal-shaped, self-locking key tags to make sure they remain on the key hooks and your original is never loaned. Fasten duplicate loaner keys to white oval-shaped, snap-hook key rings and file them on the same hook as the master key. When a loaner key is issued, insert a **Receipt Slip** recording the key recipient and date into a **Brass Holder**, and hang with the master key. Log all issued loaner keys into the **Key Loan Register** to keep a written record. All cabinets include a complete set of numbered key tags, receipt slips and holders, and key collection envelopes. Keep track of all vital key information with the **Cross Reference Index Kit** (includes instructions on how to establish your two-tag system along with 3-way Key Cross Reference System and a complete Key Loan Register).

Sturdy welded-steel cabinet is made of durable 20-gauge steel with scratch and chip-resistant sand-colored finish that stands up to everyday use. Doors and key panels are 18-gauge steel and feature full length piano hinges for easy movement. Predrilled holes and mounting hardware (included) for easy wall mounting or use on a table or shelf. Door-mounted disc tumbler lock provides added security and comes with two keys.

**MTO 7** Master-keyed, dual-control, or combination locks are available for an additional charge, see page 9 for details.

Model No.	Key Capacity	W	Dimensions H	D	Combo Lock	Dual Control
201803003	30	8"	12-1/8"	2-1/2"	N	Y
201806003	60	14"	17-1/2"	3-1/8"	Y	Stocked
201809003	90	14"	17-1/2"	3-1/8"	N	Y
201812003	120	16-1/2"	20-1/2"	5"	Y	Y
201818003	180	16-1/2"	20-1/2"	5"	Y	Y
201824003	240	16-1/2"	20-1/2"	5"	Y	Y
201830003	300	16-1/2"	31-1/8"	5"	Y	Y
201839003	390	16-1/2"	31-1/8"	5"	Y	Y
201846003	460	16-1/2"	31-1/8"	5"	Y	Y



**B. Dupli-Key® Two-Tag Cabinet With Dual Control Lock**

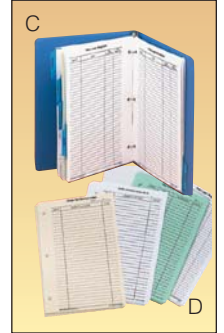
Same features as Dupli-Key® Two-Tag Key Cabinets above, but available with Dual Control lock to maximize security. Dual Locks require two keys to open. In stock for immediate shipment.

**Dupli-Key® Accessories**

**C. Cross Reference Index Kit in a Binder**

Hard vinyl cover binder includes instructions on how to establish your Dupli-Key two-tag system along with Key Loan Register Sheets and a 3-Way Cross Reference Index System.

Model No.	Description	Key Capacity	W	System Size H	D
201802300	Index Binder	80	7"	9-3/4"	1/2"
201802400	Index Binder	240	7"	9-3/4"	1"



C

D

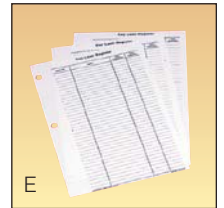
**D. Cross Reference Index**

Model No.	Description	Qty.
201802500	Cross Ref. Index System	24 per Pack

**E. Key Loan Record Sheets**

Use Key Loan Register Sheets to keep a written record of recipient and date when loaner keys are issued. 24 sheets per pack provide capacity for 200 entries.

Model No.	Description	Qty.
201802100	Key Loan Register Sheets	24 per Pack

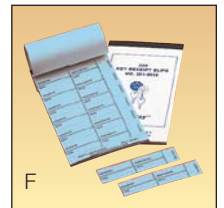


E

**F. Key Receipt Slips**

Used when a loaner key is issued, insert a Key Receipt Slip recording the key recipient and date into a Brass Holder, and hang with the master key.

Model No.	Description	Qty.
201801500	Key Receipt Slips	250 per Pack



F

**G. Brass Key Receipt Holders**

Used when a loaner key is issued, Brass Holder receives a Key Receipt Slip recording the key recipient and date key was issued. Holder is hung with the master key.

Model No.	Description	Qty.
201801626	Key Receipt Holders - Brass	100 per Pack

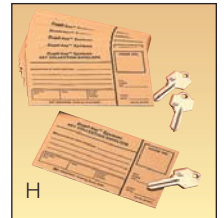


G

**H. Key Collection Envelopes**

Manila envelopes are used when loaner keys are collected to record key control data and hold the actual loaner key. Size: 3" x 5".

Model No.	Description	Qty.
201801400	Key Collection Envelopes	100 per Pack



H